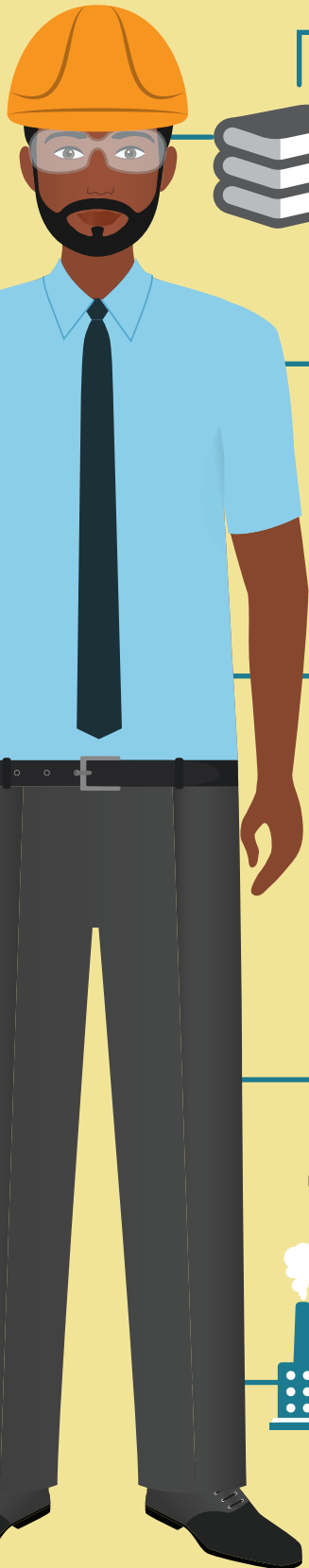


# In Demand Manufacturing Careers

## MECHANICAL ENGINEERING TECHS

## INDUSTRIAL ENGINEERS



### EDUCATION

Most employers prefer to hire candidates with associate's degrees or other postsecondary training in mechanical engineering technology.

Industrial Engineers typically need a bachelor's degree in mechanical engineering or mechanical engineering technology.



### IMPORTANT QUALITIES



- Project Management
- Work independently
- Manufacturing process
- Problem solving
- Troubleshooting
- Process Improvement
- Risk Management
- Detail oriented
- Creativity

- Project Management
- Problem solving
- Data Analysis
- Product development
- Work independently
- Management skills

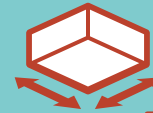


### WHAT THEY DO



Mechanical engineering technicians help mechanical engineers design, develop, test, and manufacture mechanical devices, including tools, engines, and machines. They may make sketches and rough layouts, record and analyze data, make calculations and estimates, and report their findings

Develops and documents the required parameters for machines and tools used to produce products. Analyze problems to see how mechanical and thermal devices might help solve a particular problem. Investigate equipment failures or difficulties to diagnose faulty operation and to recommend remedies. Analyze the test results and change the design or system as needed. Oversee the manufacturing process for the device



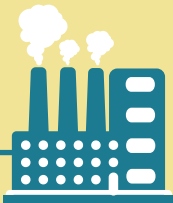
### EMPLOYMENT OPPORTUNITIES

**MEDIAN HOURLY WAGES \$20.86 TO \$27.37**

Employment of industrial machinery mechanics and machinery maintenance workers is projected to grow 7 percent from 2016 to 2026

**MEDIAN HOURLY WAGES \$29.75 TO \$43.13**

Employment of industrial engineers is projected to grow 9 percent from 2016 to 2026.



### WORK ENVIRONMENT

Mechanical engineering technicians assist with manufacturing processes in factories or with development phases in research and development labs before manufacturing takes place.

Industrial Engineers generally work in offices. They may occasionally visit worksites where a problem or piece of equipment needs their personal attention.

